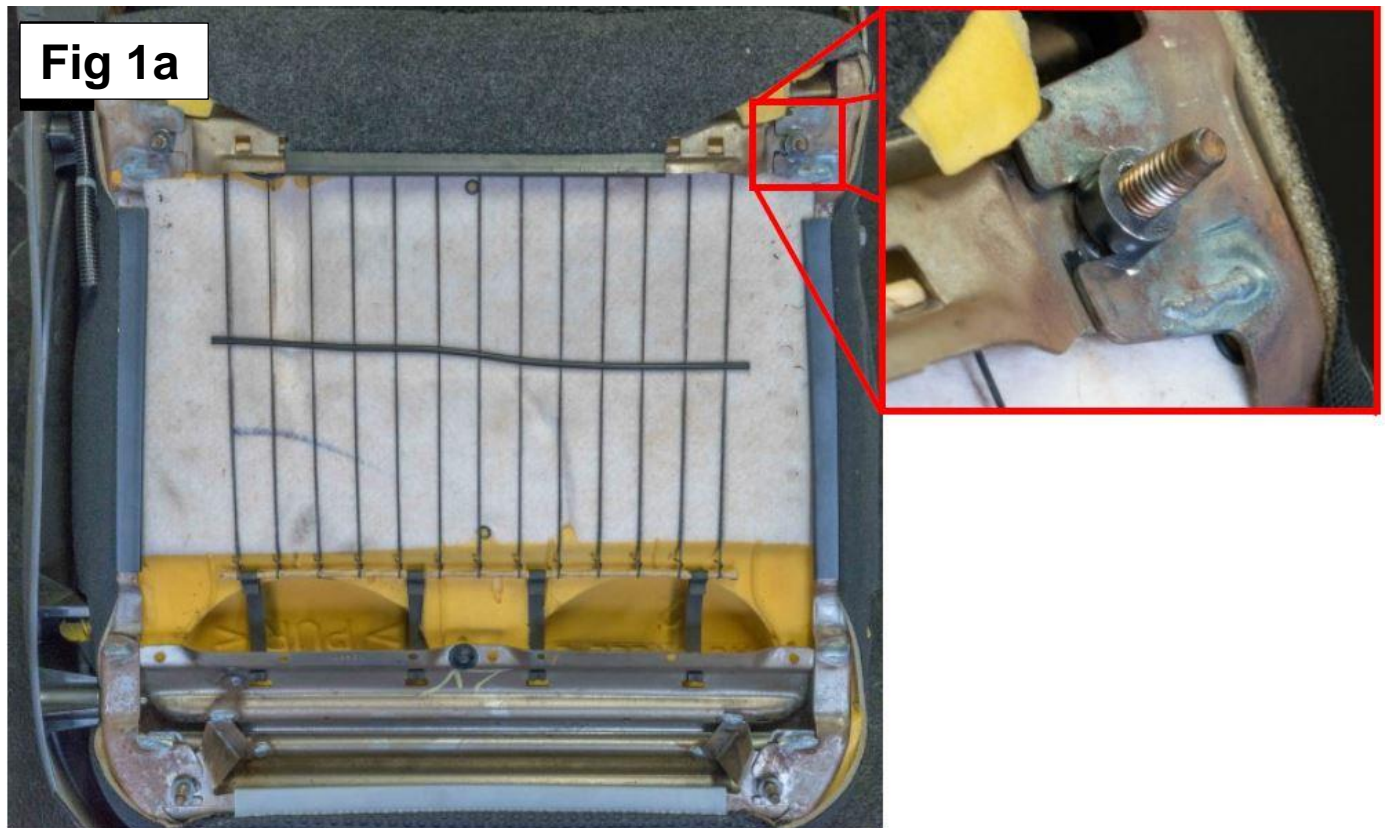


# Fitting instructions for XR6 seats into a GQ PATROL

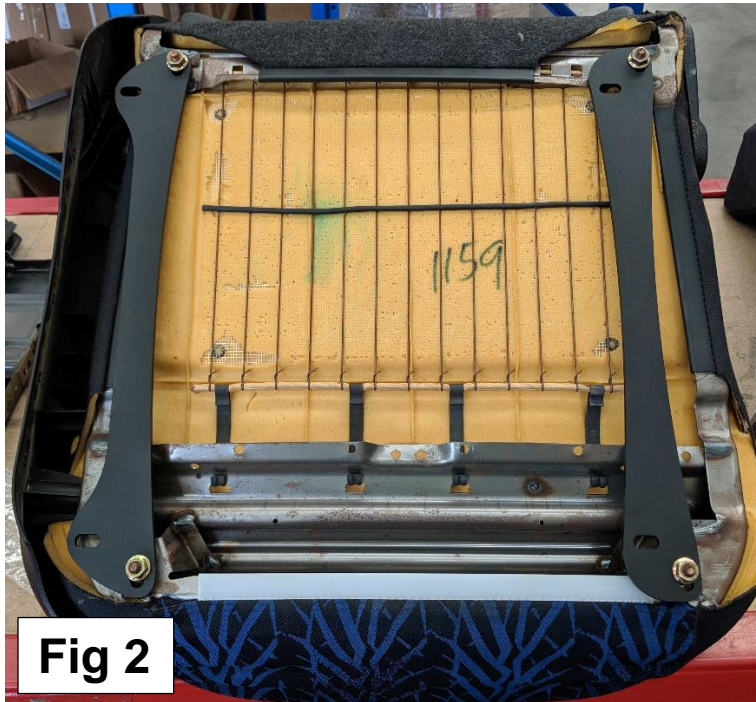
Scan this QR code with your camera app for a high-quality digital copy of these instructions



1. Pull your seat out of the car and flip it upside down, **Starting with the passenger side first**, remove the two seat rails from the base and place them to the side with the nuts, keeping in mind which rail goes to what side of the seat. These rails we are going to reuse & put the GQ seat base out of the way as you won't be needing it again either.
2. Grab your passenger side XR seat, flip that upside down, remove the four nuts holding the rails down to the falcon seat. You may also need to disconnect some wiring to be able to remove the seat rails, you can simply cut the wires as you won't be needing any of the electronics anymore. Now move the falcon rails right out of the way, as you won't be needing that either.
3. Working with the XR seat, place a small round spacer over each stud as shown below (Fig 1a).



4. Below in Figure 2 is a passenger side XR seat, note the orientation and offset of the brackets. These brackets will be mirror-imaged when you install them on the drivers side seat.

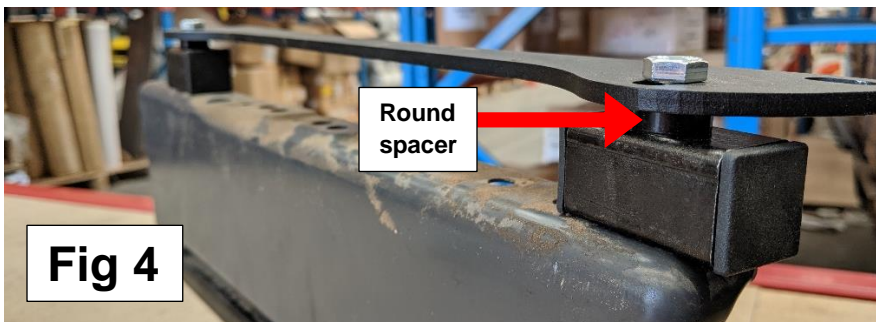


**Fig 2**

5. Now that you have the correct adapters selected, install the larger bracket onto the Nissan sliding rail that sits closest to the door (it is the larger of the two sliders) as shown in figure 3 below. Note that there should be a round spacer between the 25mm box tubing and the adapter plate. Ensure that the silver crush tubing is inserted inside the box tubing before assembly. Once you have the order correct, pass through the M8 x 50mm bolt. Although there is a welded nut on the inside of the GQ slider, we recommend fitting the supplied locking nuts to prevent anything from rattling loose over time.



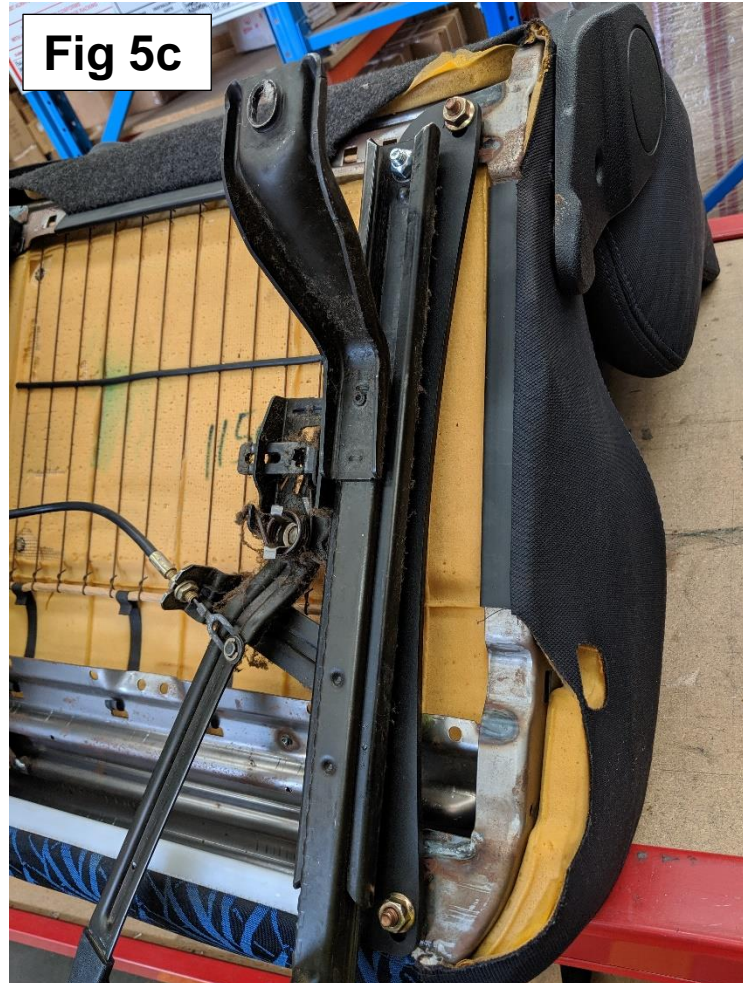
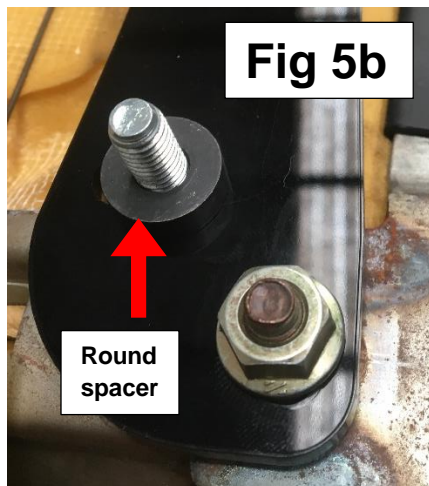
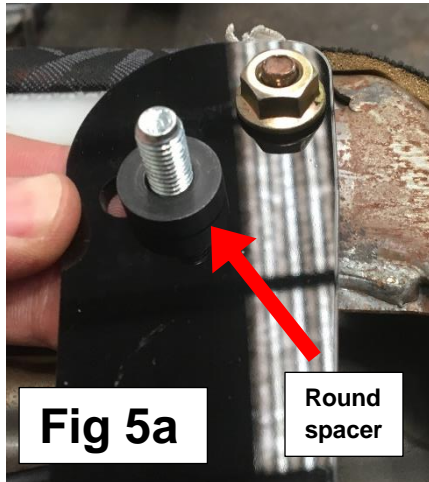
**Fig 3**



**Fig 4**



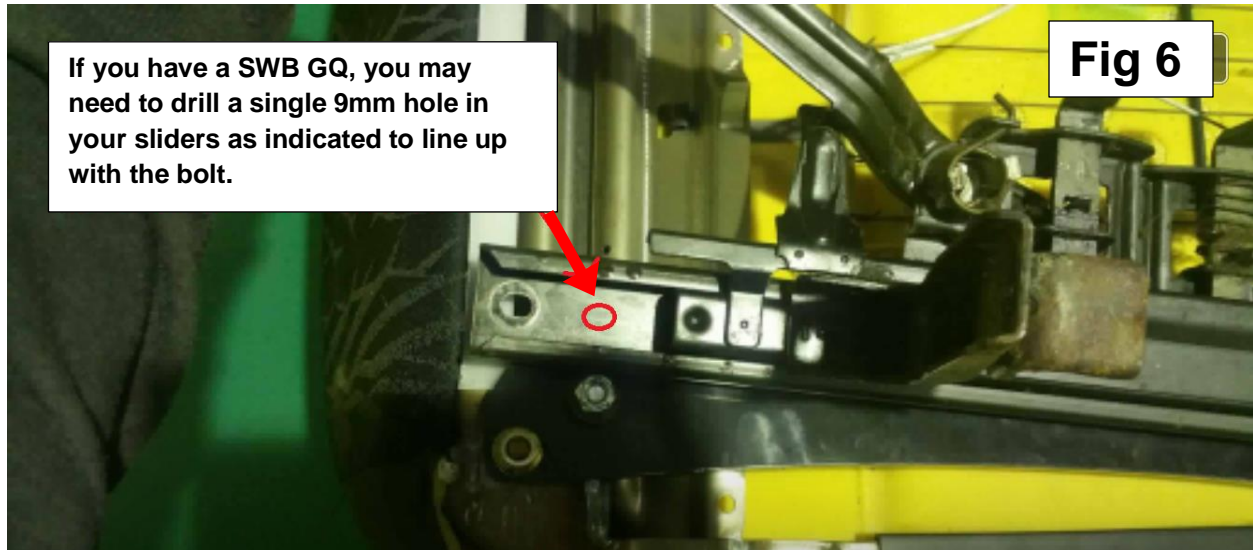
6. The inner sliding rail is very straightforward to attach. Due to the height of the mounting points no box tubing is required. Simply pass one M8 x 25mm bolt through the supplied adapter plate then place one round spacer over the thread (Fig 5a & b) then fit the inner GQ rail and secure it with the M8 cone locking nuts (Fig 5c).



7. When fitting the new seats into your GQ, make sure you line up the four bolt holes in the floor first before doing them all up, it may take a little juggling to make them all line up as the rails on each side can move independently of each other.

Once they're all in, make sure the small piece of wire is connected to both GQ rails (left to right) it lets you slide the seat back and forward, then make sure the seat will slide on the rails. Tighten up and other bolts you left finger tight earlier for the plates and you're done.

8. Some short wheelbase models require a single 9mm hole to be drilled at one end of the rail due to having different sliders as shown below in Fig 6.



9. Notify your insurance company of the changes you have made and, if necessary, apply to your road traffic authority for a mod plate to certify the install.

If you have any problems, please ask we are happy to help & will get back to you as soon as we can.

Please like our Facebook page for updates or questions.

<https://www.facebook.com/huracanfab/>